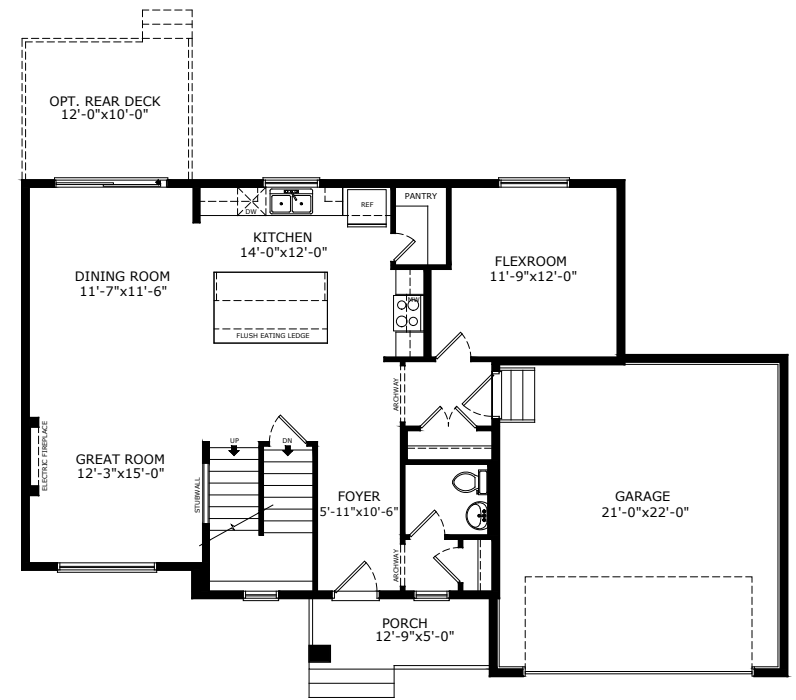


# Sterling HOMES

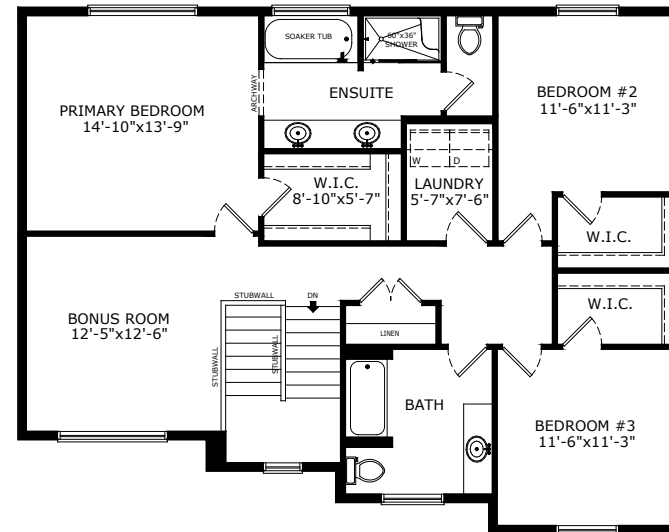
A QUALICO Company

2311 SQ FT  
3 BEDS  
2.5 BATHS

# PATRICK



MAIN: 1084 SQ FT



UPPER: 1227 SQ FT

## Build Your Life

STERLINGCALGARY.COM

# Sterling HOMES

A QUALICO Company

## ELEVATIONS



CRAFTSMAN



FARMHOUSE



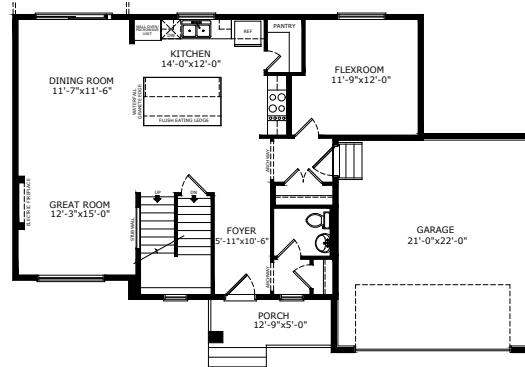
PRAIRIE



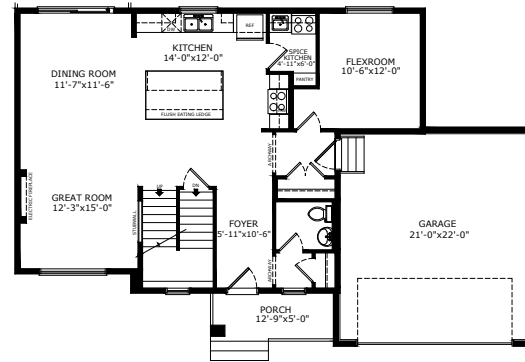
Scan here  
for floorplan  
options and  
more

## MAIN FLOOR OPTIONS

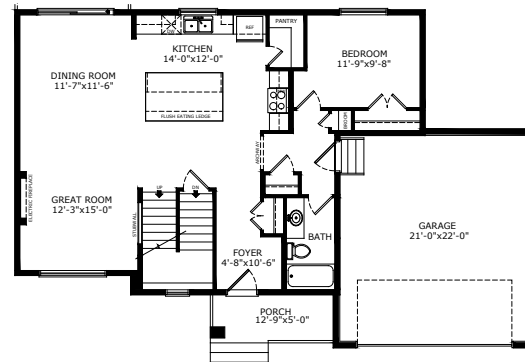
### OPTIONAL EXECUTIVE KITCHEN



### OPTIONAL SPICE KITCHEN

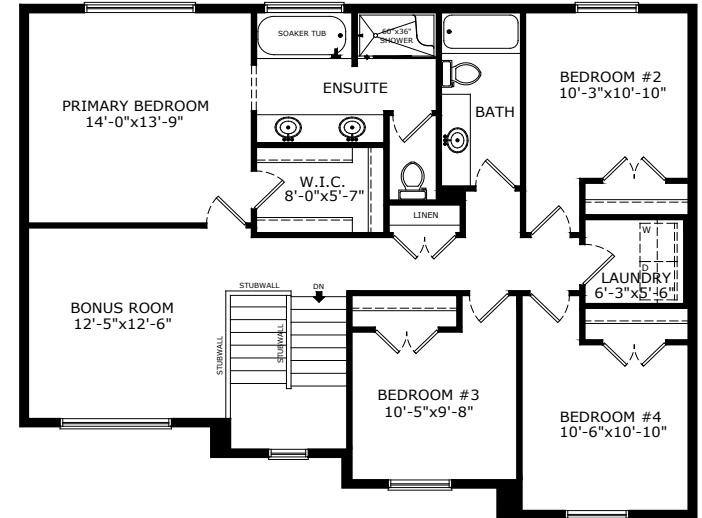


### OPTIONAL FULL BATH AND FULL BEDROOM



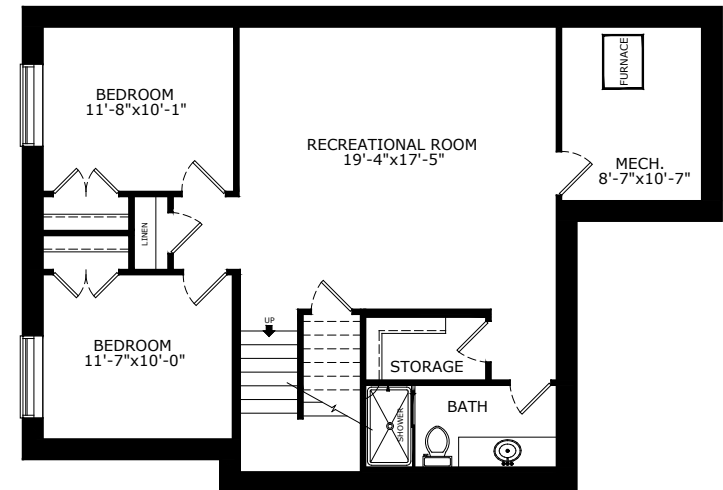
## UPPER FLOOR OPTIONS

### OPTIONAL 4 BEDROOMS



## BASEMENT OPTIONS

STANDARD 785 SQ FT



# Build Your Life

STERLINGCALGARY.COM